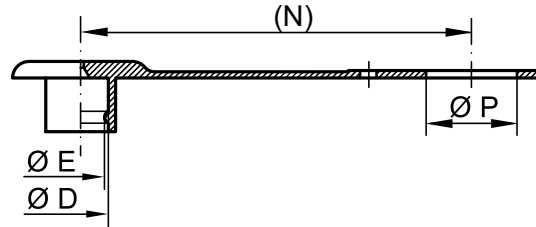


PROTECTIVE DUST CAPS

GPN 920 Type B

Free test samples:

+49 4442 982-9100
poeppele.com/en/gpn920b



Standard colour: Red

Material: PE-LD



Better fit.

Protects open plug-in couplings from damage and contamination.



Seals better.

Provides limited sealing action against an ingress or outflow of fluids.



Better.

Self-retaining design due to integral strap.

item	Suitable for external	Dimensions				Order no.
	Nominal size	D	E	(N)	P	
GPN 920 / 9997	1/4	12.5	11.5	125	22	920 9997 0000
GPN 920 / 9995	3/8	18.5	16	125	22	920 9995 0000
GPN 920 / 4984	1/2	24	23	135	29	920 4984 0000
GPN 920 / 5371	1/2	24	23	135	27	920 5371 0000

Size in mm

For information regarding materials, colours, drawings and the use of our items, please refer to pages 124/125.

You might also be interested in the following products:

GPN 920 Type A, GPN 930 Type A, GPN 930 Type B