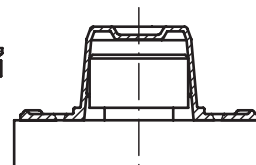
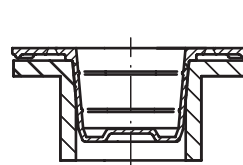
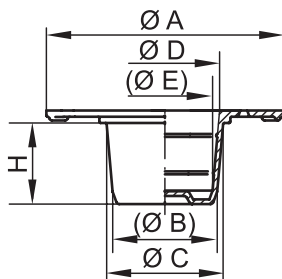


GPN 615

Free test samples:

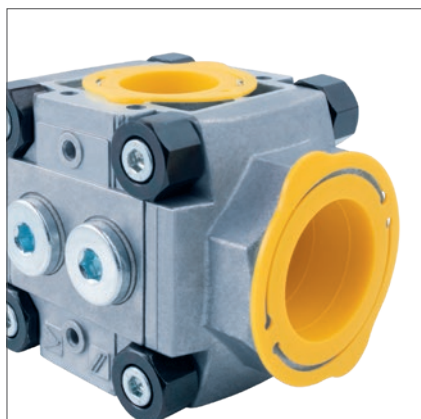
+49 4442 982-9100

poeppele.com/en/gpn615



Inner application

External application



Standard colour: Yellow

Material: PE-LD

item	Inner application				External application		Order no.
	A	(B)	C	H	D	(E)	
GPN 615 UL 88	29	7.6	9.1	10	7.7	6.2	615 0088 0000
GPN 615 UL 91	29	7.8	9.5	10	8	6.3	615 0091 0000
GPN 615 UL 107	29	9.5	11.1	10	9.6	7.9	615 0107 0000
GPN 615 UL 114	29	10.2	11.9	10	10.3	8.6	615 0114 0000
GPN 615 UL 127	29	11.5	13.1	10	11.6	9.9	615 0127 0000
GPN 615 UL 147	32	13.1	14.9	12	13.6	11.6	615 0147 0000
GPN 615 UL 167	34	14.9	17	13	15.6	13.4	615 0167 0000
GPN 615 UL 187	38	17	19.2	13	17.5	15.3	615 0187 0000
GPN 615 UL 207	40	18.6	21.1	15	19.5	16.9	615 0207 0000
GPN 615 UL 241	46	21.5	24.7	18	22.9	19.8	615 0241 0000
GPN 615 UL 309	56	28.1	30.8	19	29.7	26.4	615 0309 0000
GPN 615 UL 448	80	42.2	45.4	19	43.5	40.2	615 0448 0000
GPN 615 UL 628	95	58.4	62.8	25	60.8	56.4	615 0628 0000

Size in mm

For information regarding materials, colours, drawings and the use of our items, please refer to pages 124/125.



Saves time.

Easy removal due to ring lug.



More versatile.

The conical shape of the plug bridges larger tolerances. Can also be used as a cap.



Cleaner.

Upon request, we can manufacture in the specially designed cleanroom in accordance with VDA Volume 19 and ISO 16232. For further information, please refer to page 129.



Better.

For the protection of threads, pipes, hoses and openings. No loss of space due to ring lug lying flat on top.

Application Guide

Suitable for use as plug (Inner application)

Metric threads			Pipe thread	item
Fine thread				
M 10 × 1	M 10 × 1.5		G 1/8	GPN 615 UL 88
	M 12 × 1.5			GPN 615 UL 91
M 14 × 1.5			G 1/4	GPN 615 UL 107
	M 16 × 1.5			GPN 615 UL 114
	M 18 × 1.5			GPN 615 UL 127
M 20 × 1.5				GPN 615 UL 147
	M 22 × 1.5		G 1/2	GPN 615 UL 167
M 26 × 1.5			G 5/8	GPN 615 UL 187
	M 32 × 1.5	M 32 × 2	G 3/4	GPN 615 UL 207
			G 1	GPN 615 UL 241
			G 1 1/2	GPN 615 UL 309
				GPN 615 UL 448

This application table is a guide only. We will be happy to send you free samples for testing. For apertures and bore holes without thread, please use dimensions B and C.

You might also be interested in the following products: GPN 305, GPN 308, GPN 610, GPN 620