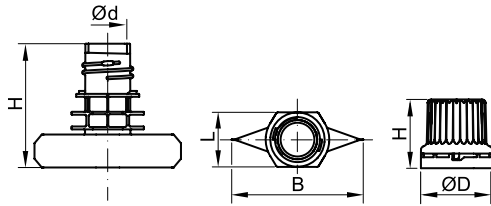


Standard programme: **Weldspouts**
and screw caps. Suitable for your product –
Pöppelmann FAMAC®.



Consistently implemented plastics expertise:
Weldspouts and screw caps. We will be happy
to advise you: +49 4442 982-3900



Filling through the weldspout

Weldspouts

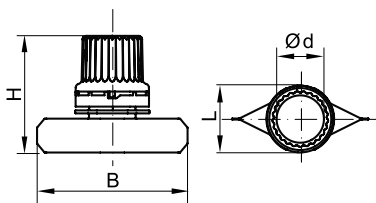
Order No.	Ø d	L	B	H	Packing unit
AE 001-37 NU	10.5 mm	18.0 mm	37.0 mm	33.8 mm	4,000
AE 002-40 N	12.5 mm	20.0 mm	40.0 mm	33.8 mm	3,000
AE 003-40 N	17.5 mm	25.0 mm	40.0 mm	33.8 mm	2,000
AE 004-50 N	21.5 mm	29.0 mm	40.0 mm	33.8 mm	1,500
AE 005-21 NU	8.5 mm	16.0 mm	21.5 mm	29.8 mm	8,000
AE 007-21 NU	8.5 mm	13.8 mm	21.5 mm	28.8 mm	8,000

Material: PE, **Colour:** natural, **N:** guide slot, **U:** ultrasonic welding

Screw caps

Order No.	Ø D	H	Suitable weldspouts	Packing unit
C-AE 001	19.5 mm	18.8 mm	AE 001-37 NU	8,000
C-AE 001 O	19.5 mm	18.8 mm		8,000
C-AE 001 O App-1 ASM	33.0 mm	18.8 mm		3,000
C-AE 001 VSO Flower	25.8 mm	48.4 mm		2,500
C-AE 002	21.9 mm	18.8 mm	AE 002-40 N	6,000
C-AE 002 O	21.9 mm	18.8 mm		6,000
C-AE 003	26.9 mm	18.8 mm	AE 003-40 N	4,000
C-AE 003 O	26.9 mm	18.8 mm		4,000
C-AE 004	30.9 mm	18.8 mm	AE 004-50 N	3,000
C-AE 004 O	30.9 mm	18.8 mm		3,000
C-AE 005 OF	17.5 mm	18.4 mm	AE 005-21 NU	8,000
C-AE 005 VSO Flower	17.5 mm	18.4 mm		3,000
C-AE 007 VSO Clover	34.0 mm	18.6 mm	AE 007-21 NU	2,500

Material: PP, **Colour:** white, **O:** Screw cap with temper-evident



Filling through the pouch

Assembled delivery (Weldspouts + Screw caps)

Order No.	Ø d	L	B	H	Packing unit
ZSB AE 001-40	10.5 mm	18.0 mm	40.0 mm	31.2 mm	4,000
ZSB AE 001-40 O	10.5 mm	18.0 mm	40.0 mm	31.2 mm	4,000
ZSB AE 002-40	12.5 mm	20.0 mm	40.0 mm	31.2 mm	3,000
ZSB AE 002-40 O	12.5 mm	20.0 mm	40.0 mm	31.2 mm	3,000
ZSB AE 003-40	17.5 mm	25.0 mm	40.0 mm	31.2 mm	2,000
ZSB AE 003-40 O	17.5 mm	25.0 mm	40.0 mm	31.2 mm	2,000
ZSB AE 004-50	21.5 mm	29.0 mm	50.0 mm	31.2 mm	1,500
ZSB AE 004-50 O	21.5 mm	29.0 mm	50.0 mm	31.2 mm	1,500

Material: PE/PP, **Colour:** natural/white, **O:** Screw cap with temper-evident

Additional materials and colours available on request.



INSTEAD OF CHAOS.

Standardised dimensions across all sizes.

- ⊕ Uniform system for all ready-to-order series AE 001 to AE 004.
- ⊕ Outstanding machinability.
- ⊕ Greater cost reductions.
- ⊕ More effective system usage, compatible with current filling systems.
- ⊕ Higher flexibility for the filling company.



INSTEAD OF CONFUSION.

Individual forms and colours and innovative special solutions.

- ⊕ Individual colour design: Many special colours according to customer requirements.
- ⊕ Outer contours can be achieved individually with low tooling costs and additional expenses.
- ⊕ Customers can request special caps to be made – such as a flip-top screw-on cap concept with tamper-evident seal.



INSTEAD OF OBSTACLES.

Intuitive design for even greater consumer benefits and convenience.

- ⊕ Convenient opening and closing of the cap.
- ⊕ Audible tearing of the tamper-evident ring.
- ⊕ Easy opening thanks to an optimised tamper-evident ring system and low opening force required.



INSTEAD OF DIRTY.

Consistent quality and exemplary cleanliness.

- ⊕ Implementation of the necessary production conditions to meet special cleanliness requirements.
- ⊕ Controlled production conditions with less than 36 particles/ccm (>0,5 µm).



INSTEAD OF SLOWLY.

Faster cycles thanks to ultrasonic welding.

- ⊕ Fast cycles up to 200 spouts/minute (double lane).
- ⊕ Short set-up times, quick format changes and high flexibility.
- ⊕ Material combinations possible, for example monomaterial packaging (pouches with a spout from monomaterial PE or PP) or paper – PE combinations (Hydra Pack).

A successful family-owned company: Focusing on people.

Pöppelmann – a strong and reliable partner. Since 1949 the family-owned company Pöppelmann with 5 production sites and 600 injection moulding, thermoforming machines and extruders has proved itself to be a leading manufacturer in the plastic processing industry. In more than 90 countries the quality “made by Pöppelmann” is appreciated. More than 2,500 highly qualified employees worldwide stand for our success.



The “Pöppelmänner and Pöppelfrauen”: They stand for productivity, quality and service.



Deutschland, Plant 3 (FAMAC®): Pöppelmann GmbH & Co. KG, Lohne.

Our Pöppelmann FAMAC® business division develops and manufactures technical functional components and packagings for the food, pharmaceutical, cosmetics and medical industry. To this end, the introduction and application of a quality and hygiene management system in accordance with the BRC Global Standard for Packaging and Packaging Materials (version 5: July 2015, category “High Hygiene Risk”) and DIN EN ISO 13485 as a quality management system for the development and manufacturing of medical products was certified by an independent institutes.



Germany, Plant 1: Pöppelmann GmbH & Co. KG, Kunststoffwerk-Werkzeugbau, Lohne



PÖPPELMANN

FAMAC®

Pöppelmann GmbH & Co. KG · Kunststoffwerk-Werkzeugbau · Pöppelmannstraße 5 · 49393 Lohne · Germany · Telephone +49 4442 982-3900
Fax +49 4442 982-417 · famac@poepelmann.com · www.poepelmann.com