

Flange Covers - GPN 650 Type A

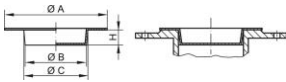
Virgin material



Material: PE-LD - Material: PE-LLD

Standard colour: yellow

Functional dimensions:



Dimension	NW mm	A	B	C	H	Article number
GPN 650 / 15 LDPE sulphur yellow	15	45	14	16,8	10	650 0015 0000
GPN 650 / 20 LDPE sulphur yellow	20	58	19	22,8	15	650 0020 0000
GPN 650 / 25 LDPE sulphur yellow	25	68	23	27	15	650 0025 0000
GPN 650 / 32 LDPE sulphur yellow	32	78	30	34	14,8	650 0032 0000
GPN 650 / 40 LDPE sulphur yellow	40	88	38	42	15	650 0040 0000
GPN 650 / 50 LDPE sulphur yellow	50	102	48	52	15	650 0050 0000
GPN 650 / 65 LDPE sulphur yellow	65	122	62	67,8	20	650 0065 0000
GPN 650 / 70 LDPE sulphur yellow	70	128	67	73,4	20	650 0070 0000
GPN 650 / 80 LDPE sulphur yellow	80	138	77	82,8	20	650 0080 0000
GPN 650 / 100 LDPE sulphur yellow	100	162	97	103,3	20	650 0100 0000
GPN 650 / 125 LDPE sulphur yellow	125	205	122	127,6	20	650 0125 0000
GPN 650 / 140 LDPE sulphur yellow	140	220	137	143,8	20	650 0140 0000
GPN 650 / 150 LDPE sulphur yellow	150	245	147	152,8	20	650 0150 0000
GPN 650 / 200 LLDPE sulphur yellow	200	300	197	202	18	650 0200 0000
GPN 650 / 250 LLDPE sulphur yellow	250	395	248	252	18	650 0250 0000

Dimensions in mm Information on materials, colours, drawings and use of our articles can be found on pages 166/167.

Our product advantages at a glance:



Passender.
Zum Schutz von Flanschen nach DIN EN 1092-1 und
DIN 28117.



Besser.
Verschließt die Öffnung und schützt die Dichtleiste der
Flanschmatur.

The following products might also interest you:



GPN 650 Form B



GPN 655 Form A



GPN 670

GPN 680