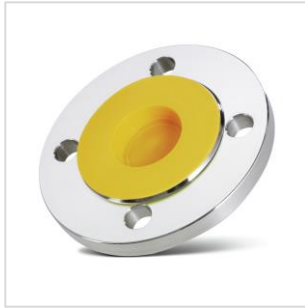
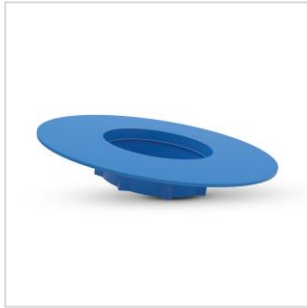


Flange Covers - GPN 650 Type B

100% Post-Consumer Recyclate

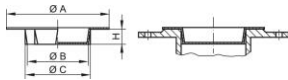


www.blauer-engel.de/uz30a

Material: PCR-PE

Standard colour: recycling blue

Functional dimensions:



Dimension	NW mm	A	B	C	H	Article number
GPN 650 / 10-R PCR-PE recycling blue	10	40	7,5	10,5	10	651 0010 RB61
GPN 650 / 15-R PCR-PE recycling blue	15	45	12,5	15,8	10	651 0015 RB61
GPN 650 / 20-R PCR-PE recycling blue	20	59	16	22	15	651 0020 RB61
GPN 650 / 25-R PCR-PE recycling blue	25	68	21	26	15	651 0025 RB61
GPN 650 / 32-R PCR-PE recycling blue	32	78	28	33,5	15	651 0032 RB61
GPN 650 / 40-R PCR-PE recycling blue	40	88	36	41,5	15	651 0040 RB61
GPN 650 / 50-R PCR-PE recycling blue	50	102	46	51	15	651 0050 RB61
GPN 650 / 65-R PCR-PE recycling blue	65	122	60	66	20	651 0065 RB61
GPN 650 / 80-R PCR-PE recycling blue	80	138	74,5	81	20	651 0080 RB61
GPN 650 / 100-R PCR-PE recycling blue	100	162	93	102	20	651 0100 RB61
GPN 650 / 150-R PCR-PE recycling blue	150	245	140	152	20	651 0150 RB61

Dimensions in mm. Information on materials, colours, drawings and use of our articles can be found on pages 166/167. For these articles, colour deviations and black dots that cannot be completely avoided in production are permissible. We recommend carrying out functional tests before series production. *The article consists of 98 % PCR-PE (Post Consumer Recyclate) and 2 % colour based on a PIR carrier (Post Industrial Recyclate).

Our product advantages at a glance:



Passender.
Zum Schutz von
Flanschen nach DIN EN
1092-1 und DIN 28117.



Vielseitiger.
Klemmrippen zur
Überbrückung größerer
Toleranzen.



Besser.
Verschließt die Öffnung und
schützt die Dichtleiste der
Flanscharmatur.



Ressourcenschonender.
Der eingesetzte Kunststoff
besteht aus 100 % Rezyklat

The following products might also interest you:



GPN 650 Form A



GPN 655 Form B



GPN 670



GPN 680